



Dimensions
20x20x10mm
to 60x60x25mm

Speeds
3,100 to 17,000 RPM

Air Delivery
.8 to 23.5 CFM

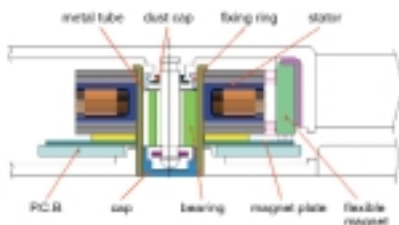
Static Pressure
.055 to .33 (Inch-H₂O)

Innovative Magnetic System Design Dramatically Increases Fan Lifetime

Our revolutionary Magnetic System (MS) design concept sets Sunon KDE Series fans and B Series blowers apart from any other technology available today. This patented approach offers exceptionally longer life and quieter operation than any other fans and blowers. In traditional fans, the shaft carries the rotor's weight which causes the impeller to wobble which in turn increases noise as well as friction that wears out fan components. Our unique MS design applies a built-in, precision magnetic field to prevent the impeller from wobbling, even when rotating at any angle when installed.

- This technique significantly extends the **life expectancy** of the bearing, improves **performance**, and reduces **noise** to as low as 18dBA
- These fans and blowers are available with standard bearings or our **exclusive** Vapo Bearing for ultra long life and operation at temperatures above 70°C
- Fan life and **reliability** are also extended further by eliminating the impeller's lock washer, oil ring and spacing washers
- This design approach offers high performance and **value** at a cost generally no greater than more complex traditional designs
- Magnetic System Design is just one more **innovation** from the technology leader in thermal management fans and blowers
- We also welcome the challenge of **custom** designs to meet special application requirements

SUNON Magnetic Levitation System



www.sunonusa.com

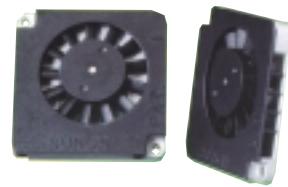
SUNON Magnetic System (MS) 2-Phase, Half-Wave Motor Series



Fans

Size (mm)	Model	Bearing	Volt	RPM	CFM	Inch H ₂ O	dBA
20x20x10	KDE0501PFB1-8 MS	Ball	5 VDC	17000	1.5	0.33	28.0
	KDE0501PFB2-8 MS	Ball	5 VDC	14000	1.1	0.21	26.0
	KDE0501PFB3-8 MS	Ball	5 VDC	10000	0.8	0.13	23.0
	KDE0501AFB1-8 MS	Ball	5 VDC	17000	1.5	0.33	28.0
	KDE0501AFB2-8 MS	Ball	5 VDC	14000	1.1	0.21	26.0
	KDE0501AFB3-8 MS	Ball	5 VDC	10000	0.8	0.13	36.0
25x25x6	KDE0502PEV1-8 MS.N	Vapo	5 VDC	13000	3.0	0.22	31.0
	KDE0502PEV2-8 MS.N	Vapo	5 VDC	11500	2.7	0.18	26.0
	KDE0502PEB1-8 MS.N	Ball	5 VDC	13000	3.0	0.22	32.0
	KDE0502PEB2-8 MS.N	Ball	5 VDC	11500	2.7	0.18	27.0
25x25x10	KDE0502PFB1-8 MS.V	Ball	5 VDC	13000	3.5	0.25	26.0
	KDE0502PFB2-8 MS.V	Ball	5 VDC	10000	3.0	0.18	25.0
	KDE0502PFB3-8 MS.V	Ball	5 VDC	7500	2.3	0.11	24.0
	KDE0502AFB1-8 MS.V	Ball	5 VDC	13000	3.5	0.25	26.0
	KDE0502AFB2-8 MS.V	Ball	5 VDC	10000	3.0	0.18	25.0
	KDE0502AFB3-8 MS.V	Ball	5 VDC	7500	2.3	0.11	24.0
25x25x15	KDE0502PHB1-8 MS	Ball	5 VDC	12000	3.7	0.28	29.0
	KDE0502PHB2-8 MS	Ball	5 VDC	10000	3.1	0.16	22.0
	KDE0502PHB3-8 MS	Ball	5 VDC	7000	2.2	0.11	16.0
30x30x6	KDE0503PEV1-8 MS.N	Vapo	5 VDC	9500	4.9	0.14	28.0
	KDE0503PEV2-8 MS.N	Vapo	5 VDC	8000	3.7	0.09	23.0
	KDE0503PEB1-8 MS.N	Ball	5 VDC	9500	4.9	0.14	29.0
	KDE0503PEB2-8 MS.N	Ball	5 VDC	8000	3.7	0.09	24.0
30x30x10	KDE0503PFB1-8 MS.V	Ball	5 VDC	9500	5.5	0.15	25.0
	KDE0503PFB2-8 MS.V	Ball	5 VDC	8000	4.6	0.11	22.5
	KDE0503PFB3-8 MS.V	Ball	5 VDC	5500	3.6	0.07	20.0
	KDE0503AFB1-8 MS.V	Ball	5 VDC	9500	5.5	0.15	25.0
	KDE0503AFB2-8 MS.V	Ball	5 VDC	8000	4.6	0.11	22.5
	KDE0503AFB3-8 MS.V	Ball	5 VDC	5500	3.6	0.07	20.0
30x30x15	KDE0503PHB1-8 MS	Ball	5 VDC	8500	6.0	0.16	27.0
	KDE0503PHB2-8 MS	Ball	5 VDC	7000	4.8	0.11	22.0
	KDE0503PHB3-8 MS	Ball	5 VDC	5500	3.2	0.10	17.0
35x35x6	KDE0535PEV1-8 MS.N	Vapo	5 VDC	6800	5.0	0.07	23.0
	KDE0535PEV2-8 MS.N	Vapo	5 VDC	5800	4.3	0.055	19.0
	KDE0535PEB1-8 MS.N	Ball	5 VDC	6800	5.0	0.07	24.0
	KDE0535PEB2-8 MS.N	Ball	5 VDC	5800	4.3	0.055	20.0
35x35x10	KDE0535PFB1-8 MS	Ball	5 VDC	7500	6.5	0.12	25.5
	KDE0535PFB2-8 MS	Ball	5 VDC	6000	5.2	0.08	21.0
	KDE0535PFB3-8 MS	Ball	5 VDC	4500	3.8	0.05	18.0
40x40x6	KDE0504PEV1-8 MS	Vapo	5 VDC	7000	5.9	0.10	32.0
	KDE0504PEV2-8 MS	Vapo	5 VDC	6000	5.3	0.08	28.0
	KDE0504PEB1-8 MS	Ball	5 VDC	7000	5.9	0.10	33.0
	KDE0504PEB2-8 MS	Ball	5 VDC	6000	5.3	0.07	29.0
40x40x8	KDE0504PDV2-8 MS	Vapo	5 VDC	6600	5.4	0.12	32.5
	KDE0504PDB2-8 MS	Ball	5 VDC	6600	5.4	0.12	33.0
	KDE1204PDV2-8 MS	Vapo	12 VDC	6600	5.4	0.12	32.5
	KDE1204PDB2-8 MS	Ball	12 VDC	6600	5.4	0.12	33.0
40x40x10	KDE1204PFVX MS	Vapo	12 VDC	8800	8.6	0.23	36.0
	KDE1204PFV1 MS	Vapo	12 VDC	7400	7.3	0.18	30.0
	FDE1204PFV2 MS	Vapo	12 VDC	5500	4.9	0.12	25.0
	KDE1204PFVX MS	Ball	12 VDC	8800	8.6	0.23	37.0
	FDE1204PFB1 MS	Ball	12 VDC	7400	7.3	0.18	31.0
	FDE1204PFB2 MS	Ball	12 VDC	5500	4.9	0.12	26.0
40x40x20	KDE1204PKVX MS	Vapo	12 VDC	8200	10.8	0.27	27.5
	KDE1204PKV1 MS	Vapo	12 VDC	7200	8.9	0.21	25.5
	KDE1204PKV2 MS	Vapo	12 VDC	6200	7.7	0.16	21.0
	KDE1204PKV3 MS	Vapo	12 VDC	5200	6.3	0.11	18.0
	KDE1204PKBX MS	Ball	12 VDC	8200	10.8	0.27	29.0
	KDE1204PKB1 MS	Ball	12 VDC	7200	8.9	0.21	26.0
	KDE1204PKB2 MS	Ball	12 VDC	6200	7.7	0.16	21.5
	KDE1204PKB3 MS	Ball	12 VDC	5200	6.3	0.11	18.5

45x45x10	KDE1245PFVX MS	Vapo	12 VDC	7500	10.2	0.20	36.0
	KDE1245PFV1 MS	Vapo	12 VDC	6600	8.9	0.15	31.0
	KDE1245PFV2 MS	Vapo	12 VDC	5300	7.2	0.12	25.0
	KDE1245PFBX MS	Ball	12 VDC	7500	10.2	0.20	37.0
	KDE1245PFB1 MS	Ball	12 VDC	6600	8.9	0.15	33.0
	KDE1245PFB2 MS	Ball	12 VDC	5300	7.2	0.12	27.0
50x50x10	KDE1205PFVX MS	Vapo	12 VDC	6500	12.4	0.17	36.0
	KDE1205PFV1 MS	Vapo	12 VDC	5600	10.6	0.12	30.0
	KDE1205PFV2 MS	Vapo	12 VDC	4500	8.5	0.10	26.0
	KDE1205PFBX MS	Ball	12 VDC	6500	12.4	0.17	37.0
	KDE1205PFB1 MS	Ball	12 VDC	5600	10.6	0.12	32.0
	KDE1205PFB2 MS	Ball	12 VDC	4500	8.5	0.10	28.0
50x50x10 (G)	KDE1205PFV1 MS.G	Vapo	12 VDC	6500	12.4	0.19	35.0
	KDE1205PFV2 MS.G	Vapo	12 VDC	5500	10.6	0.15	30.0
	KDE1205PFV3 MS.G	Vapo	12 VDC	4500	8.5	0.10	25.0
	KDE1205PFB1 MS.G	Ball	12 VDC	6500	12.4	0.19	36.0
	KDE1205PFB2 MS.G	Ball	12 VDC	5500	10.6	0.15	31.5
	KDE1205PFB3 MS.G	Ball	12 VDC	4500	8.5	0.10	26.0
50x50x15	KDE1205PHV1 MS	Vapo	12 VDC	5800	17.0	0.23	33.0
	KDE1205PHV2 MS	Vapo	12 VDC	4700	13.0	0.17	29.0
	KDE1205PHV3 MS	Vapo	12 VDC	3700	10.2	0.12	22.0
	KDE1255PHB1 MS	Ball	12 VDC	5800	17.0	0.23	34.0
	KDE1255PHB2 MS	Ball	12 VDC	4700	13.0	0.17	29.5
	KDE1255PHB3 MS	Ball	12 VDC	3700	10.2	0.12	22.5
55x55x10 (G)	KDE1255PFV1 MS.G	Vapo	12 VDC	5700	15.0	0.16	36.0
	KDE1255PFV2 MS.G	Vapo	12 VDC	4700	13.0	0.12	30.0
	KDE1255PFV3 MS.G	Vapo	12 VDC	4000	10.2	0.08	26.0
	KDE1255PFB1 MS.G	Ball	12 VDC	5700	15.0	0.16	36.5
	KDE1255PFB2 MS.G	Ball	12 VDC	4700	13.0	0.12	30.5
	KDE1255PFB3 MS.G	Ball	12 VDC	4000	10.2	0.08	27.0
60x60x10 (G)	KDE1206PFV1 MS.G	Vapo	12 VDC	5200	16.5	0.17	35.0
	KDE1206PFV2 MS.G	Vapo	12 VDC	4300	14.0	0.12	34.5
	KDE1206PFV3 MS.G	Vapo	12 VDC	3600	11.3	0.07	28.5
	KDE1206PFB1 MS.G	Ball	12 VDC	5200	16.5	0.17	36.0
	KDE1206PFB2 MS.G	Ball	12 VDC	4300	14.0	0.12	35.0
	KDE1206PFB3 MS.G	Ball	12 VDC	3600	11.3	0.07	29.0
60x60x15	KDE1206PHV1 MS	Vapo	12 VDC	4300	21.0	0.18	36.0
	KDE1206PHV2 MS	Vapo	12 VDC	3800	18.0	0.14	31.0
	KDE1206PHV3 MS	Vapo	12 VDC	3000	15.0	0.12	25.0
	KDE1206PHB1 MS	Ball	12 VDC	4300	21.0	0.18	37.5
	KDE1206PHB2 MS	Ball	12 VDC	3800	18.0	0.14	31.5
	KDE1206PHB3 MS	Ball	12 VDC	3000	15.0	0.12	26.0
60x60x20	KDE1206PKV1 MS	Vapo	12 VDC	4300	22.0	0.17	32.0
	KDE1206PKV2 MS	Vapo	12 VDC	3600	18.5	0.14	27.5
	KDE1206PKV3 MS	Vapo	12 VDC	3200	15.0	0.10	25.0
	KDE1206PKB1 MS	Ball	12 VDC	4300	22.0	0.17	32.5
	KDE1206PKB2 MS	Ball	12 VDC	3600	18.5	0.14	28.0
	KDE1206PKB3 MS	Ball	12 VDC	3200	15.0	0.10	26.0
60x60x25	KDE1206PTV1 MS	Vapo	12 VDC	4500	23.5	0.21	33.5
	KDE1206PTV2 MS	Vapo	12 VDC	3800	19.3	0.15	29.0
	KDE1206PTV3 MS	Vapo	12 VDC	3100	16.0	0.10	21.0
	KDE1206PTB1 MS	Ball	12 VDC	4500	23.5	0.21	34.5
	KDE1206PTB2 MS	Ball	12 VDC	3800	19.3	0.15	31.0
	KDE1206PTB3 MS	Ball	12 VDC	3100	16.0	0.10	22.0



Blowers

Size (mm)	Model	Bearing	Volt	RPM	CFM	Inch H ₂ O	dBA
25x25x10	B0502PFB1-8 MS	Ball	5 VDC	14000	1.0	0.40	37.0
	B0502PFB2-8 MS	Ball	5 VDC	10000	0.8	0.25	30.0
	B0502PFB3-8 MS	Ball	5 VDC	7000	0.45	0.20	19.0
	B0502AFB1-8 MS	Ball	5 VDC	14000	1.0	0.40	37.0
	B0502AFB2-8 MS	Ball	5 VDC	10000	0.8	0.25	30.0
	B0502AFB3-8 MS	Ball	5 VDC	7000	0.45	0.20	19.0
30x30x10	B0503PFB1-8 MS	Ball	5 VDC	10000	1.3	0.35	36.0
	B0503PFB2-8 MS	Ball	5 VDC	8000	1.1	0.26	30.0
	B0503PFB3-8 MS	Ball	5 VDC	5500	0.55	0.22	17.0
	B0503AFB1-8 MS	Ball	5 VDC	10000	1.3	0.35	36.0
	B0503AFB2-8 MS	Ball	5 VDC	8000	1.1	0.26	30.0
	B0503AFB3-8 MS	Ball	5 VDC	5500	0.55	0.22	17.0

Specifications subject to change without notice.